



STUDENT CONDUCT & TITLE IX OFFICE

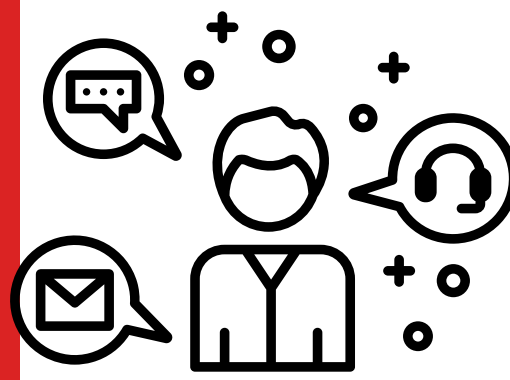
Contact Info

210-486-0926

SAC-CARES@ALAMO.EDU

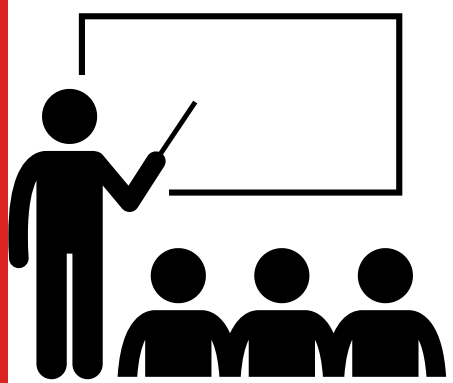
NON-ACADEMIC GRIEVANCE

Students or guests feel they have been treated unfairly by a college official through forms of discrimination, abuse, and/or harassment or have any concerns regarding customer service.



NON-ACADEMIC MISCONDUCT

Student disciplinary process that protects the learning environment by addressing possible violations of the



Student Code of Conduct and hold students accountable through educational enrichment and professional development

PETITIONS

Students can submit petition for refund, dropped courses, enrollment status, etc.

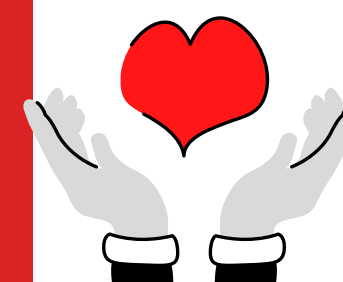


- Physical or Mental health illness or injury
- Death of family member
- Unforeseen hardship that impacts academics progress

STRATEGIES OF BEHAVIORAL INTERVENTION (SOBI)

The SOBI Team promotes students well-being through an active process of assessment and intervention.

- Hostile or aggressive behavior
- Depression
- Isolation/withdrawal
- Decline in self-care/hygiene
- Classroom management issues



TITLE IX

A federal law that prohibits discrimination of sex (gender), sexual orientation & gender identity of employees and students of educational institutions receiving federal financial assistance.

